



ENERGYGUARD

CUSTOMER ENTRANCE HEATED AIR CURTAINS

An **AIR CURTAIN** is the **ONLY** door that is both open and closed at the same time, even sealing itself around penetrating objects. The air curtain uses a wall of air generated by specialized fans and directional discharge to separate areas of pressure or temperature differential.

Air curtains accomplish this and at the same time:

- Maintain the temperature comfort level by preventing the entrance of cold air every time the door opens
- Increase safety by providing dry floors for people and product movement
- Reduce energy cost by retaining heat in winter months or air conditioned air in the summer months (AES air curtains generally provide significant pay back within the first three years)

AES Heated Customer Entrance Air Curtains:

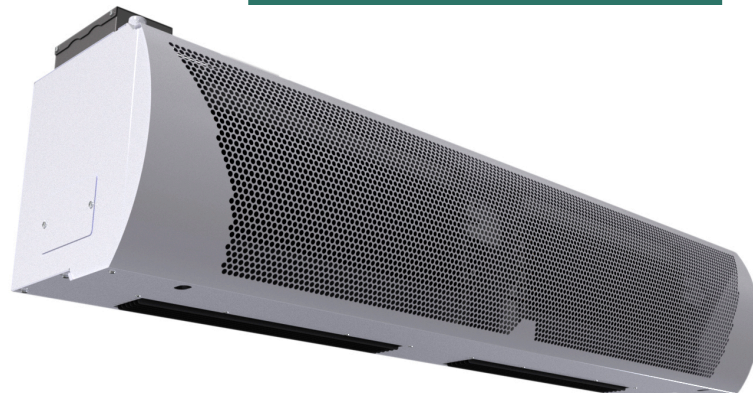
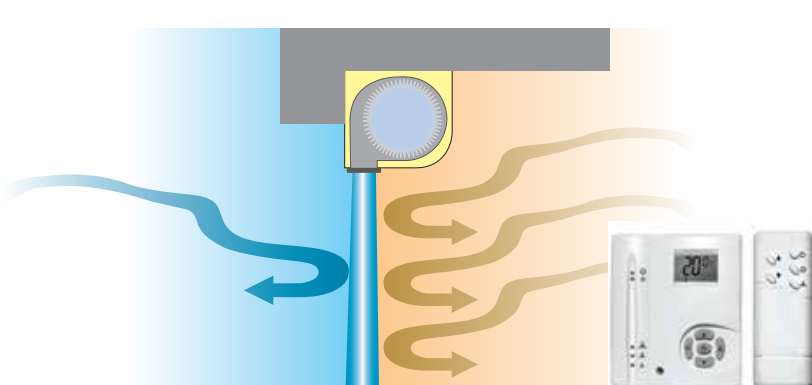
- Are manufactured with a powder coated, galvanized steel shell for appearance and durability
- Thermostatically controlled heat for winter operation
- Ambient operation for summer
- AES heated air curtains address those applications where there is both lack of heat and the usual loss of heat

AIR CURTAINS form an invisible barrier between the outside air and the inside environment by maintaining a forced wall of air which provides:

- Energy Savings—both heat & air conditioning
- Employee and Client Comfort—seals out cold air
- Enhanced Sanitation & Food Safety
- Environmental Barrier—seals out dust, fumes, flying insects
- Environmentally Responsible—reduces carbon footprint

AES AIR CURTAINS are a perfect low maintenance solution for a variety of high traffic doorways, including:

- Grocery stores
- Restaurants
- Hotels
- Hospitals
- Convenience stores



AES ENERGYGUARD 2000E-CEH SERIES AIR CURTAIN SPECIFICATIONS

MODEL		2010E8/208-CEH	2010E8/600-CEH	2015E16/208-CEH	2015E16/600-CEH	2020E16/208-CEH	2020E16/600-CEH
OUTPUT	KW KBTU/h	8.0 27.3		16.1 54.9			
AIR VOLUME	m³/h cfm	2000 1178		4000 2350		6000 3500	
AIR VELOCITY	MPS FPM	9.5 2700					
MAX HEIGHT	m ft.	2.0 to 3.5 6.5 to 11.5					
AIR TEMP. RISE	°C °F	9 16.2		14 25.2		9 16.2	
DIMENSIONS (Width-height-depth)	mm in.	1044x394x298 41.1x11.7x15.5		1514x394x298 59.6x15.5x11.7		2020x394x298 79.5x15.5x11.7	
WEIGHT	Kg. Lb.	35 77.16		42 93		57 126	
MOTOR INPUT	HP Watts	0.34 250		0.721 530			
FLA DRAW		23	9.0	48.2	18.0	48.2	18.0
VOLTAGE		208	575	208	575	208	575
SOUND LEVEL @ 5M		60db		65db		66db	

NOTE: All motors are 208 volt, single phase. Heating elements are either 208 volt, 3 phase or 575 volt, 3 phase as designated.



CERTIFICATION / COMPLIANCE

CSA C22.2 STD No. 46
UL STD 2011
NSF STD 37

DISTRIBUTED BY



ADVANCED ENERGY SOLUTIONS, INC.
 Bay 1H 1916 - 30 Ave. NE, Calgary, AB T2E 7B2
 Administration/Technical: (866) 284-9726
 Sales (877) 736-0466
www.aircurtain.ca